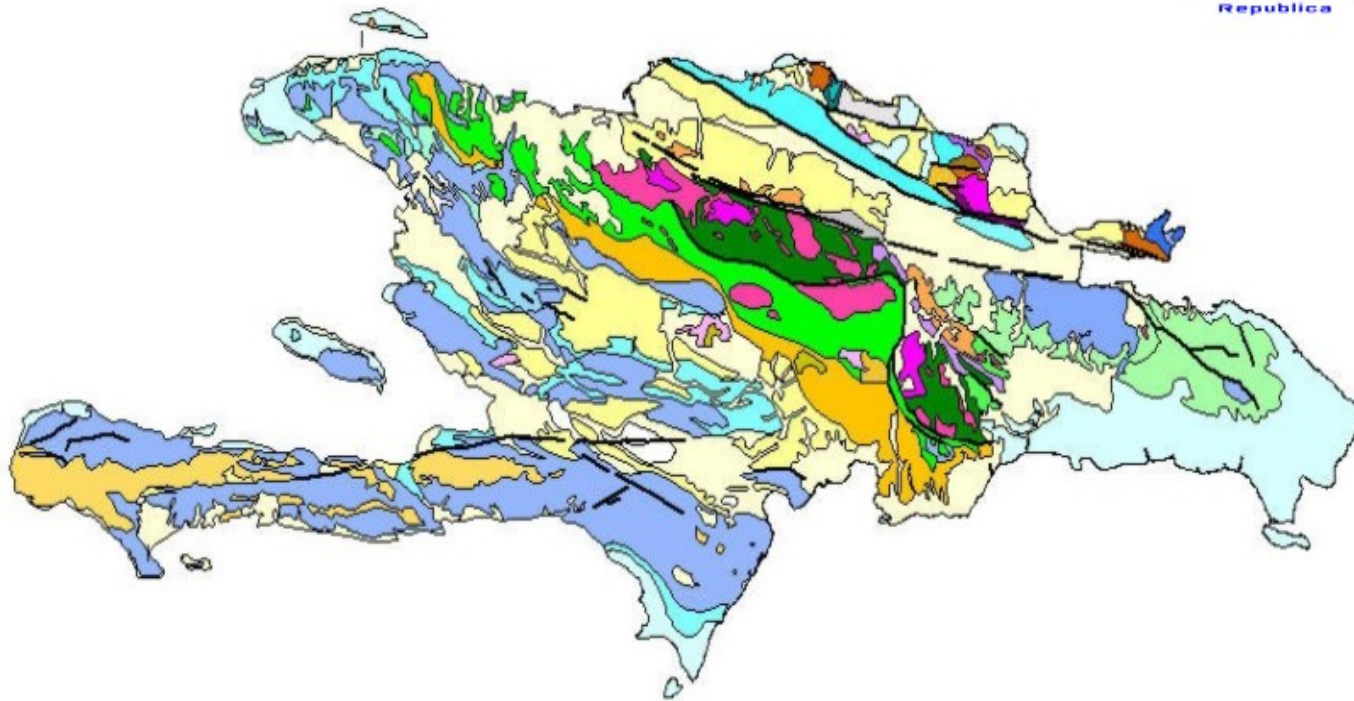


GEOLOGY MAP OF DOMINICAN REPUBLIC



LEGENDA

SEDIMENTARY ROCKS

Recent	Aluvium, lake and fluvial deposits	Cretaceous	Conglomerates, shales, shales (Favia Group, Valdeson Conglomerate)
Pliocene-Pleistocene	Upper coastal sand deposits	Recent	Limestones (Marty Pedro-Pedernera Fm.)
Late Miocene	Polymictic conglomerate (Las Malas Fm.)	Las Bacas-B. Miocene	Siltstones, shales, conglomerate (Marta-Luperón Fm.)
Miocene-Pliocene	Polymictic conglomerate (various)	Pliocene-L. Miocene	Andesite tuff, limestone, chert (Imber Fm.)
Miocene-Pliocene	Siltstone rocks	Las Chorreras-Pliocene	Siltstones, shales, limestones (Fava Pinar-Palca Gull)
Miocene	Karstic limestones (Las Malas)	Las Chorreras-Socorro	Limestones (Duro Unit), limestones, tuff, andesites (Pearden Fm.)
Miocene	San Marcos dolostones	Las Chorreras	Volcanic rocks, sand and loess (Fava Group, El Oro and El Sello Units)
Oligocene-Miocene	Gabbro limestones and marls (Maldonado, Aba, San Marcos Fm.)	Las Chorreras	Andesite flows and tuff, agillite (Las Casas Fm.)

IGNEOUS AND METAMORPHIC ROCKS

Pliocene-Pleistocene	Diorite	Las Chorreras	Mafic basalts, basalts, plagioclase rocks (Sello Cabral/Pearden Fm.)
Pliocene-Pleistocene	Diorite-Andesite	Early Cretaceous	Splite, andesite, tuff, calcareous calcarenaceous rocks (Las Ranchas Fm.)
Recent	Diorite intercalated with limestone	Cretaceous	Gneiss, quartzite, gneiss, schists (Duro's Complex)
Cretaceous	Gabbro	Cretaceous	Quartz-metapelite shales, andesite schists (Amor-Roman Fm.)
	Granite	Cretaceous	Serpentinized peridotite
	Amphibolite	Cretaceous	Metakalderic intrusive rocks
Early to Late Cretaceous	Diorite, intercalated sedimentary rocks (Duro/Pearden/Marty Pedro Fm.)	Las Chorreras-Early Tertiary	Granitic rocks, mostly lamella